



**LUTHER BEE**  
Proprietary Limited

# LUTHER BEE (PTY) LTD ENGINEERING

COMPANY PROFILE

# Introduction

Luther Bee (Pty) Ltd is a proudly South African, 100% black-owned engineering and technical services company, established to serve the mining, industrial, and construction sectors. As an emerging enterprise with a strong foundation in mechanical engineering, our mission is to provide reliable, high-quality repairs, rebuilds, and component servicing to help our clients reduce downtime, extend equipment life, and improve operational efficiency.

Our business is built on deep industry knowledge, technical competence, and a commitment to safety, quality, and transformation. We offer a wide range of mechanical and structural repair services, including:

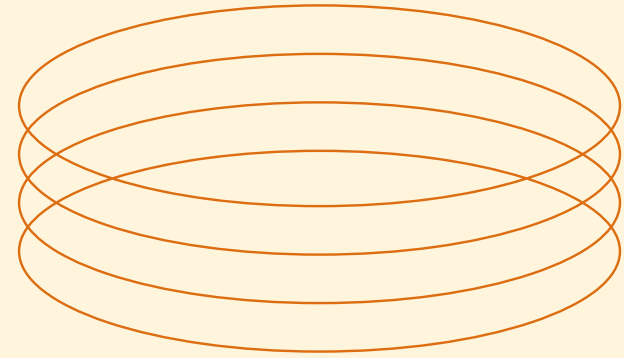
- Pump Repairs and Refurbishment
- Gearbox Repairs and Overhauls
- Hydraulic System Repairs
- Drifter Rebuilds and Testing
- Winch Repairs
- Boom and Bucket Rebuilds
- Hopper and Chute Fabrication
- Sandblasting and Surface Coating
- General Component Repairs and Custom Engineering

At the heart of our operations is our fully functional and well-equipped workshop, supported by a team of qualified artisans, fitters, welders, machinists, and technicians. This in-house capacity allows us to maintain full control over quality, turnaround time, and technical standards—while offering clients reliable and cost-effective solutions.

We proudly maintain strategic partnerships with industry-leading OEMs, enabling us to access advanced training, technical support, and product knowledge. These collaborations are part of structured Enterprise Supplier Development (ESD) and skills transfer programs that not only strengthen our technical capabilities but also support our long-term goal of becoming a trusted Tier-1 service provider in South Africa's mining sector.

As a young and ambitious company, Luther Bee (Pty) Ltd is driven by a vision of growth, transformation, and meaningful participation in the industrial economy. We are committed to building a reputation based on integrity, service excellence, innovation, and a deep respect for health, safety, and environmental standards.





## Key drivers

-  Innovation & Technology
-  Quality & Reliability
-  Customer Focus & Partnerships

*Work With Us*

# Why Work With Us

Choosing Luther Bee (Pty) Ltd means partnering with a technically capable, reliable, and transformation-driven service provider. We offer far more than just repairs—we deliver lasting value, technical assurance, and a partnership built on integrity and performance.

## Here's Why Clients Choose Us:

### 1. In-House Repair & Rebuild Capability

Our fully equipped workshop and experienced technical team allow us to complete complex rebuilds—including pumps, gearboxes, hydraulics, and drifters—quickly, cost-effectively, and to OEM standards.

### 2. Full Control of Quality & Turnaround

We don't outsource critical work. Our in-house processes ensure faster turnaround times, tighter quality control, and greater accountability for results.

### 3. OEM Partnerships & Technical Support

We work with industry-leading OEMs who support us through skills transfer, training, and Enterprise Supplier Development (ESD)—enhancing our service standards and aligning us with global best practices.

### 4. Skilled & Certified Technicians

Our team includes qualified artisans, fitters, welders, and hydraulic specialists, all trained to meet the demanding safety and quality requirements of the mining industry.

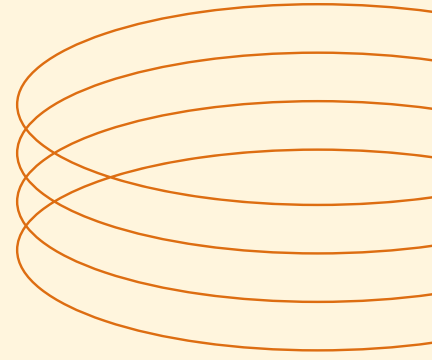
### 5. Value-Driven, Client-Focused

We take pride in building long-term relationships. Our goal is to minimize your equipment downtime, reduce operating costs, and support your maintenance goals with technical precision and responsiveness.

### 6. Transformation & Empowerment

As a 100% black-owned, emerging engineering company, we are committed to meaningful economic participation, local job creation, and skills development in South Africa's industrial economy.

 "We don't just repair — we restore performance, build trust, and drive efficiency."



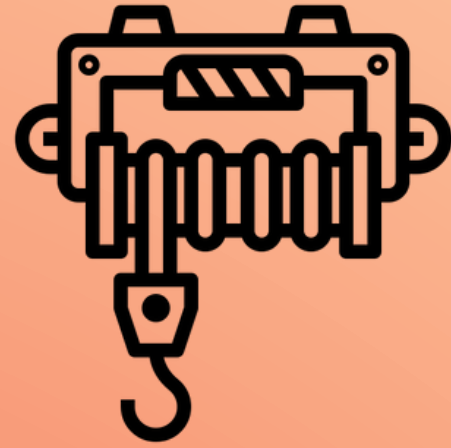
# Services We Offer

## Key drivers

-  Innovation & Technology
-  Quality & Reliability
-  Customer Focus & Partnerships

- At Luther Bee (Pty)Ltd, we deliver comprehensive heavy equipment and engineering repair solutions designed to keep your operations running at peak performance. Our expertise spans a wide range of critical services, including Pump Repairs, Winch Repairs, Gearbox Repairs, Hydraulics, Sandblasting, Bucket Repairs, Boom Repairs, Hoppers Refurbishment, and Components Repairs & Rebuilds.
- We combine skilled craftsmanship, precision engineering, and strict adherence to OEM standards to restore equipment reliability, extend service life, and reduce downtime. Whether it's a complete component rebuild, structural repair, or preventative maintenance, our team ensures every job meets the demanding requirements of the mining and industrial sectors.

 [READ MORE](#)



# Winch Repair Services Overview

## 1. Inspection and Diagnostics

- Visual and functional inspection
- Load testing
- Identifying worn or damaged components
- Checking drum, cable, motor, and brake systems

## 2. Mechanical Repairs

- Replacing worn gears, shafts, and bearings
- Drum and cable replacements or re-spooling
- Brake system repairs or replacements
- Gearbox servicing

## 3. Electrical and Hydraulic Repairs

- Motor rewinding or replacement (electric winches)
- Solenoid and control switch servicing
- Hydraulic valve and pump repairs (hydraulic winches)
- Fluid replacement and leak detection

## 4. Preventive Maintenance

- Lubrication
- Corrosion protection
- Tension adjustments
- Regular servicing schedules

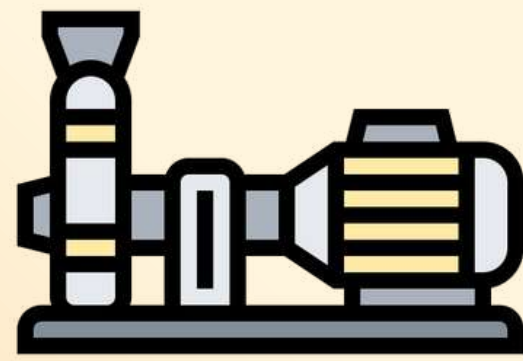
## 5. Testing and Certification

- Load and performance testing after repair
- Compliance with safety standards (e.g., Lifting Machinery Regulations)
- Issuance of certification for industrial or marine use

## 6. Upgrades and Retrofitting

- Upgrading old winches with modern control systems
- Safety feature integration (overload protection, emergency stop)





# Pump Repair Services

## 1. Inspection and Diagnostics

- Detailed fault analysis
- Vibration, pressure, and flow testing
- Root cause failure investigations

## 2. Mechanical Repairs

- Shaft, impeller, and seal replacements
- Bearing and coupling repairs
- Pump housing refurbishment
- Dynamic balancing and alignment

## 3. Electrical & Hydraulic Repairs

- Motor rewinding or replacement (for electric-driven pumps)
- Control panel troubleshooting
- Hydraulic circuit diagnostics and repairs

## 4. Types of Pumps We Repair

- Centrifugal Pumps
- Submersible Pumps
- Slurry Pumps
- Gear Pumps
- Piston & Diaphragm Pumps
- Multistage and Booster Pumps
- Dewatering Pumps
- Screw and Lobe Pumps

## 5. On-Site & Workshop Services

Mobile repair teams available for on-site breakdowns  
Fully equipped workshop for full pump strip and overhaul

## Why Choose Us?

- **OEM-compliant repair standards**
- **Quick turnaround and emergency support**
- **Skilled technicians with mining and heavy industry experience**
- **Cost-effective repair vs. replacement solutions**



## 6. Preventative Maintenance

Scheduled servicing and inspections  
Lubrication, wear monitoring, and component life tracking

## 7. Testing and Certification

- Hydrostatic pressure tests
- Performance testing under load
- Delivery of post-repair reports and certificates



# Gearbox Repairs

## 1. Diagnostics & Failure Analysis

- On-site or in-shop inspection
- Analysis of excessive wear, overheating, or vibration
- Root cause investigation to prevent repeat failures

## 2. Heavy-Duty Gearbox Repairs

- Repair or replacement of worn gears, bearings, and shafts
- Housing restoration and crack repairs
- Seal replacements to prevent oil leaks in dusty environments
- Precision alignment and reassembly

## 3. Gearbox Overhaul & Rebuilds

- Strip-down and full OEM-spec overhaul
- Sandblasting and component cleaning
- Installation of new internals (OEM or equivalent)
- Quality control and alignment checks

## 4. Types of Mining Gearboxes We Repair

- Conveyor Drive Gearboxes
- Crusher Gearboxes
- Ball Mill Gearboxes
- Reclaimer and Stacker Gearboxes
- Bucket Wheel Drive Gearboxes
- Agitator and Feeder Gearboxes

## Testing & Commissioning

- Load testing and vibration monitoring
- Gear contact pattern checks
- Lubrication system inspection and fluid replacement
- Commissioning assistance available on-site

## Field Services for Remote Mining Sites

- On-site gearbox inspection and minor repairs
- Gearbox removal and reinstallation support
- Emergency breakdown response
- Condition monitoring and predictive maintenance



## ✓ Why Trust Us With Your Gearbox Repairs?

- Skilled technicians with multi-brand experience
- Precision engineering tools and workshop capabilities
- Fast turnaround and emergency repairs available
- Detailed failure reports and repair documentation
- Extended service warranties available



# Our Drifter Services Include:

## 1. Comprehensive Repairs & Overhauls

- Full strip-down and component inspection
- Replacement of worn parts (pistons, rotation units, gear sets)
- Housing crack repair and resealing
- Hydraulic or pneumatic system restoration
- Reassembly with OEM torque and clearance specifications



## Testing & Quality Assurance

- Functional testing under pressure
- Leak, flow, and impact tests
- Noise, vibration, and RPM checks
- Full repair reports and certification upon completion

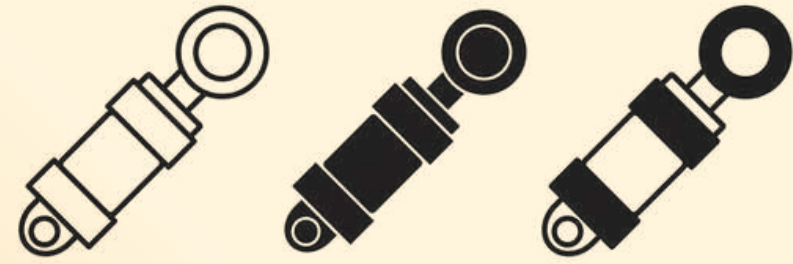


## Preventative Maintenance

- Seal replacements and wear-part servicing
- Performance monitoring and routine inspections
- Scheduled maintenance programs for high-utilization sites

### Why Our Drifter Services Stand Out

- OEM-compliant repairs and processes
- Skilled technicians trained in underground mining conditions
- Fast turnaround and parts sourcing
- Cost-effective alternative to full unit replacement
- Backed by our fully equipped workshop and mobile field teams



# Hydraulics

## 1. Hydraulic Cylinder Repairs

- Strip, assess, and rebuild cylinders
- Rod rechroming or replacement
- Seal replacement and pressure testing
- Honing of cylinder barrels

## 2. Hydraulic Pump and Motor Repairs

- Complete teardown and failure analysis
- Repair or replacement of internal components
- Testing under full-load conditions
- Brands supported: Bosch Rexroth, Parker, Eaton, Danfoss, etc.

## 3. Hose & Fitting Services

- Fabrication and replacement of high-pressure hydraulic hoses
- Custom hose assemblies for OEM equipment
- Leak detection and sealing

## 4. Hydraulic Power Pack Services

- Design, repair, and upgrade of hydraulic power units
- Component refurbishment and system retrofitting
- Filtration and cooling system upgrades
- 

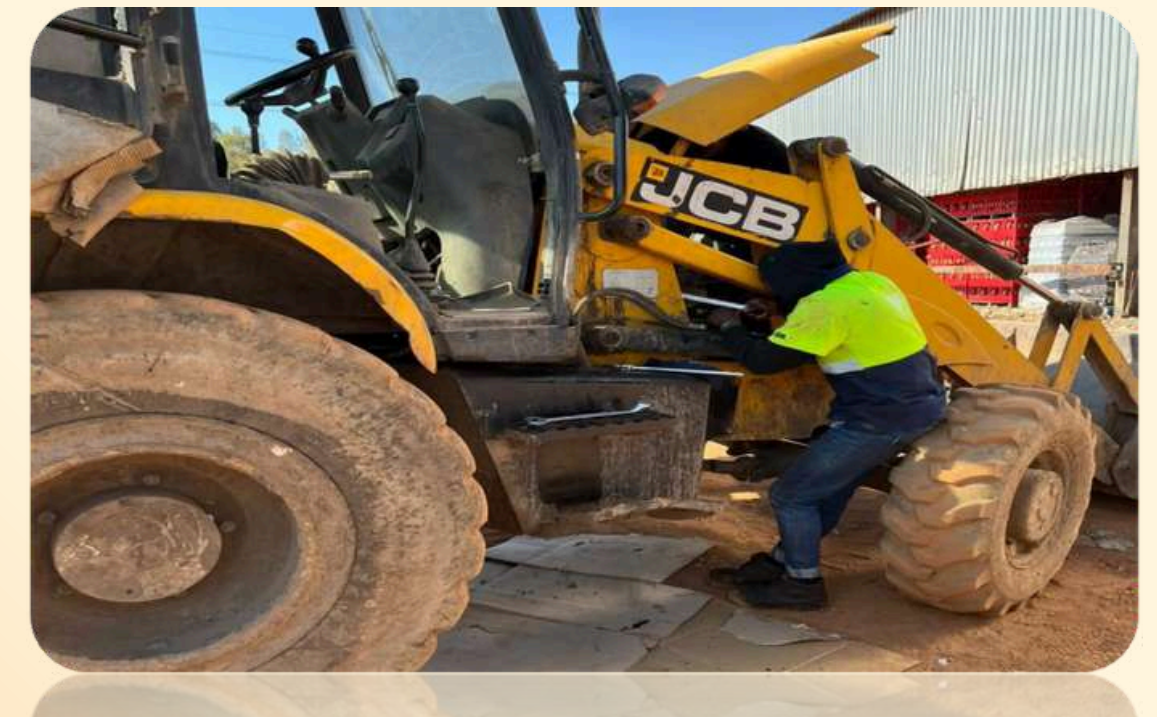
## 5. System Diagnostics & Troubleshooting

- On-site pressure, flow, and temperature testing
- Identification of leaks, contamination, or control failures
- Preventative maintenance and fluid sampling



### ✓ Why Partner With Us?

- **Mining-sector experience (surface & underground)**
- **Precision repairs that meet OEM standards**
- **State-of-the-art testing equipment**
- **Fast turnaround to reduce downtime**
- **Extended warranties on major overhauls**





# TMM Repair Services

## 1. Mechanical Repairs

- Engine diagnostics and overhauls.
- Transmission repairs and replacements.
- Differential and final drive repairs.
- Brake system servicing.

## 2. Drivetrain & Axle Repairs

- Axle straightening and rebuilding.
- Gearbox repairs.
- Prop shaft balancing.



## 3. Full Machine Rebuilds

- Complete overhaul of underground and surface TMM equipment.
- Restoration to OEM specifications.

## 4. Custom Modifications & Upgrades

- Operator cabin modifications.
- Safety feature installations (FOPS/ROPS, proximity detection systems).
- Productivity improvement upgrades.



### ✓ Why Choose Us?

- Skilled boilermakers and coded welders with mining experience
- Repairs that meet or exceed OEM specifications
- Quality assurance inspections and repair documentation
- Use of certified wear-resistant materials
- Commitment to safety, durability, and cost-efficiency





# Bucket Repair Services

## 1. Structural Repairs

- Crack detection and welding (MIG, TIG, Stick)
- Replacement of sidewalls, floors, and cheek plates
- Reinforcement of high-stress areas
- Frame straightening and alignment

## 2. Wear Component Replacement

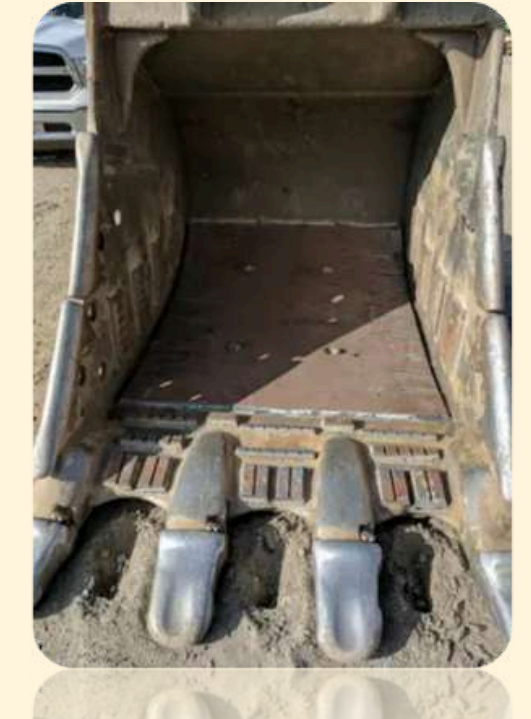
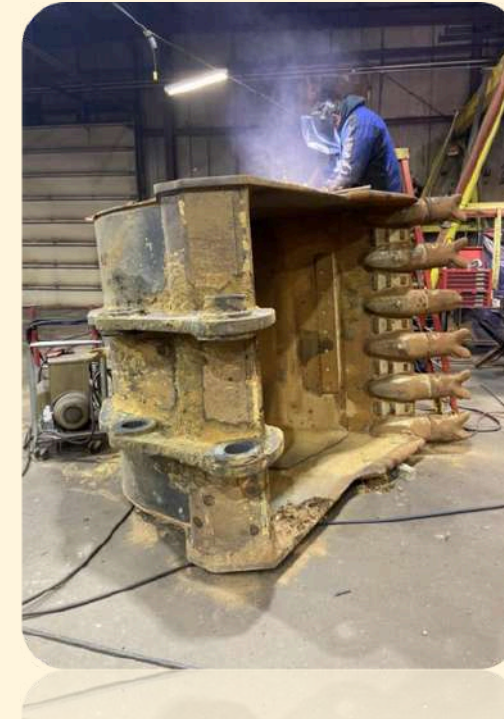
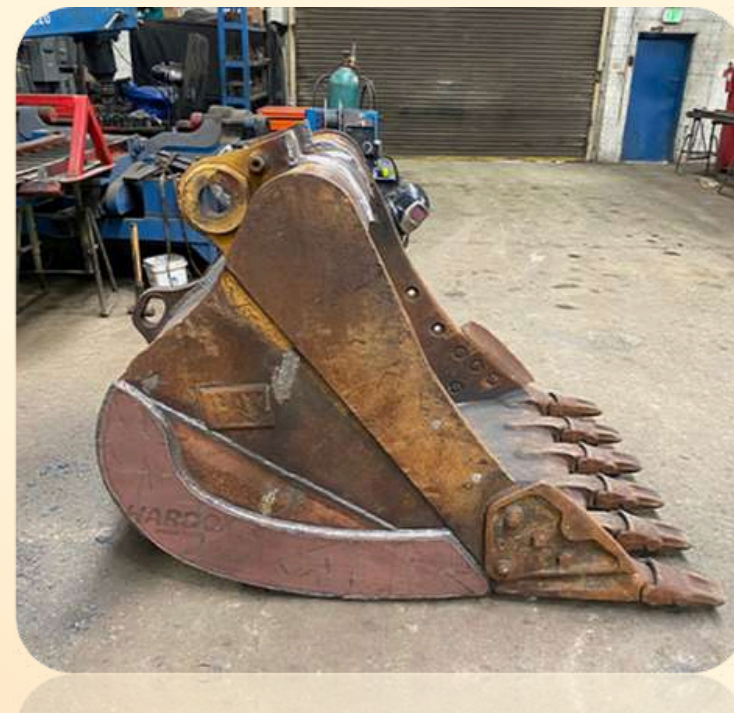
- Replacement of worn cutting edges, lip plates, and shrouds
- Installation of new wear strips and liners
- Rebuild of bucket corners, adaptors, and teeth
- Use of high-grade wear-resistant materials (e.g., Hardox, Domex)

## 3. Refurbishment and Upgrades

- Full strip-down, sandblasting, and inspection
- Custom hardfacing and overlay welding
- Bucket redesign or modification to suit application
- Weight optimization without compromising durability

## 4. Types of Buckets We Service

- Excavator Buckets
- Loader Buckets
- Face Shovel Buckets
- Backhoe Buckets
- Dragline Buckets
- Underground LHD Buckets



### ✓ Why Choose Us?

- Skilled boilermakers and coded welders with mining experience
- Repairs that meet or exceed OEM specifications
- Quality assurance inspections and repair documentation
- Use of certified wear-resistant materials
- Commitment to safety, durability, and cost-efficiency





# Our Sandblasting Services

## 1. Surface Preparation

- Abrasive blasting for rust, paint, and scale removal
- Pre-coating surface profiling (anchor pattern creation)
- Surface prep to SA 2.5 / SA 3 standards (as per ISO 8501)

## 2. Component & Equipment Blasting

- Buckets, frames, hoppers, pipes, tanks, and truck bodies
- Heavy machinery parts (e.g. pump casings, gearboxes, axles)
- Structural steel and fabricated components

## 3. Abrasive Media Options

- Garnet
- Glass beads
- Steel grit
- Aluminium oxide
- Silica-free eco-friendly options (as per safety compliance)

## 4. Mobile & On-Site Sandblasting

- Fully equipped mobile sandblasting units
- On-site services for mining operations and large structures
- Dust-controlled systems for environmental safety

## 5. Post-Blasting Services

- Surface inspections and roughness testing
- Priming and industrial painting (optional)
- Corrosion protection coatings available (epoxy, zinc-rich primers)

### ✓ Why Choose Us?

- Experienced team trained in mining safety protocols
- High-capacity blasting equipment for fast turnaround
- Strict quality control and surface finish verification
- Environmental compliance (dust suppression, PPE, containment)
- Optional pickup and delivery of components





# Boom Repair Capabilities

## 1. Inspection and Damage Assessment

- Visual and non-destructive testing (NDT)
- Crack detection and fatigue analysis
- Measurement and structural alignment checks
- Failure root cause analysis

## 2. Structural Repairs and Rebuilds

- Crack gouging and precision welding (MIG, TIG, Stick)
- Replacement of damaged plates, lugs, or gussets
- Realignment and straightening using hydraulic jigs
- Reinforcement of stress-prone areas with additional bracing

## 3. Fabrication and Modifications

- Rebuilding damaged booms to OEM specs
- Custom boom extensions or strengthening
- Upgrades for heavier load applications
- Bucket and attachment mounting point repairs

## 4. Types of Mining Equipment We Repair

- Excavator Booms
- Shovel Booms
- Dragline and Crane Booms
- Drill Rig Booms
- Underground Loaders and LHD Booms

## Quality Assurance

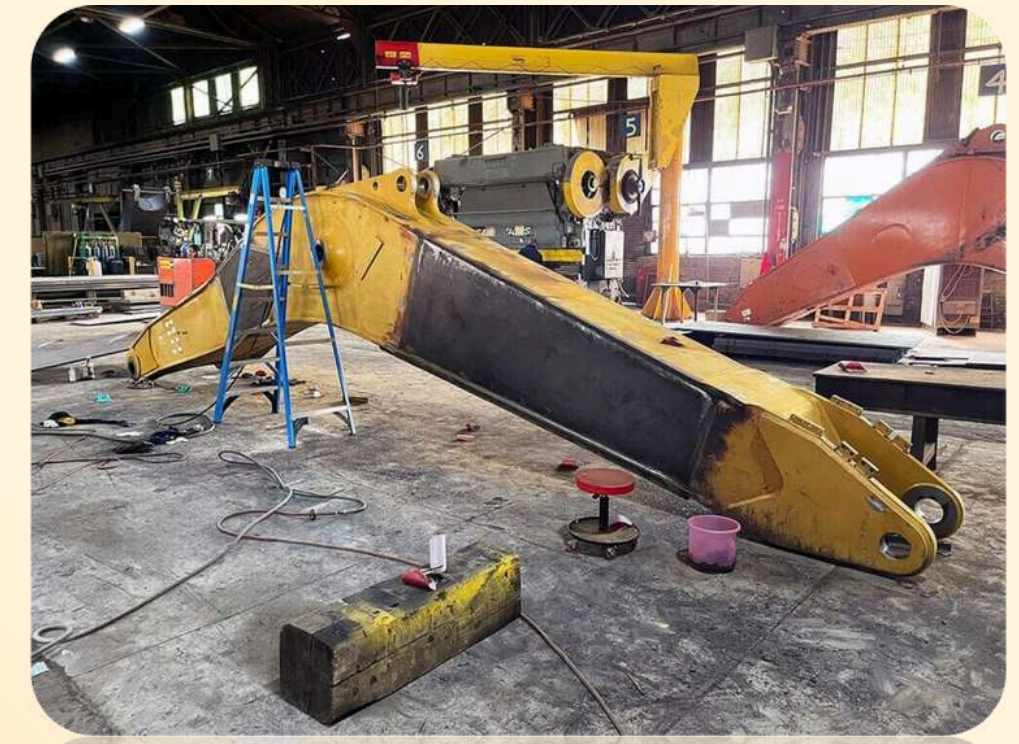
- All repairs follow OEM standards or client specs
- Welders certified for structural and pressure components
- Load and stress testing before return to service
- Detailed inspection reports and sign-offs provided

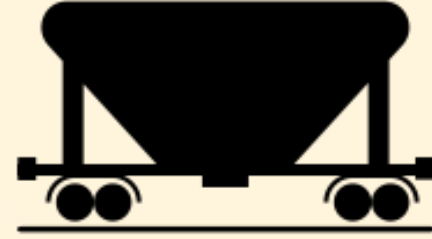
## Why Partner With Us?

- Deep experience in surface and underground mining equipment
- Safe and reliable repairs that minimize downtime
- Skilled boilermakers, welders, and mechanical engineers
- Fast turnaround and emergency support available
- Compliance with MSHA, OEM, and ISO safety standards

## Field Services & Workshop Support

- On-site emergency repairs and welding
- Fully equipped workshop with lifting & handling capacity
- Turnkey refurb and repaint options available
- Coordination with safety and engineering teams on mine sites





# Hoppers Refurbishment

## 1. Inspection and Damage Assessment

- Structural integrity checks and wear analysis
- Liner condition assessment
- Crack and corrosion detection
- Root cause failure investigation

## 2. Repair and Refurbishment

- Replacement or patching of worn-out liner plates
- Welding of cracks, seams, and joints
- Rebuilding of feed chutes, side walls, and base plates
- Reinforcement for high-impact zones

## 3. Custom Hopper Fabrication

- Fabrication of new hoppers to OEM or client specs
- Use of abrasion-resistant steel (e.g., Hardox, Domex)
- Design of heavy-duty hoppers for specific materials (ore, coal, aggregates)
- Integration of chutes, screens, gates, and grizzly bars

## 4. Lining & Coating Options

- Wear liners (steel, rubber, ceramic)
- Corrosion protection coating (epoxy, polyurethane)
- Custom lining based on material flow and application

### Types of Hoppers We Service

- ROM (Run-of-Mine) Hoppers
- Crusher Feed Hoppers
- Transfer Hoppers
- Storage & Surge Bins
- Grizzly and Vibratory Hoppers

### On-Site & Workshop Capabilities

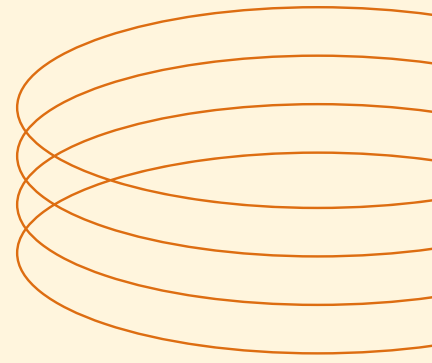
- Field repairs and maintenance at mine sites
- Heavy-duty workshop for full rebuilds
- Hot work permit compliance and confined space protocols observed
- Rapid response for production-critical equipment





## Key drivers

-  Innovation & Technology
-  Quality & Reliability
-  Customer Focus & Partnerships



# SUPPLIES

- PPE | Hand Tools
- Electrical Consumables
- TMM Engines and Spares
- Hydraulic Oils | Greases
- Pinch Bar Tool
- Bolts and Nuts
- Welding Electrodes
- Engine Cleaner
- Winch Safety Equipment
- General Valves (Gate | Diaphragm | Butterfly | Reducing Valves)
  
- Office Furniture
- Printing Paper
- Cleaning Materials
- Computer Consumables
- Various and General Stationery Items
- Corporate Gifts | Branded Materials



# THANK — YOU



REGISTRATION



**+27 71 931 1843**

**2020/594499/07**

**INFO@LUTHERBEE.CO.ZA**

**WWW.LUTHERBEE.CO.ZA**

**PLOT NO 25 JQ308**

**KROONDAL 0350**